

NOVACOM®

WWW.NOVACOM-VACUUM.COM

Since 191

NOVACOM • Z.A. de Sars et Rosières • 30, rue de l'épau • 59230 ROSULT • France • Tel : +33 (0)3 27 30 53 53 • VAT Number : FR57 381 120 484



vortex

range

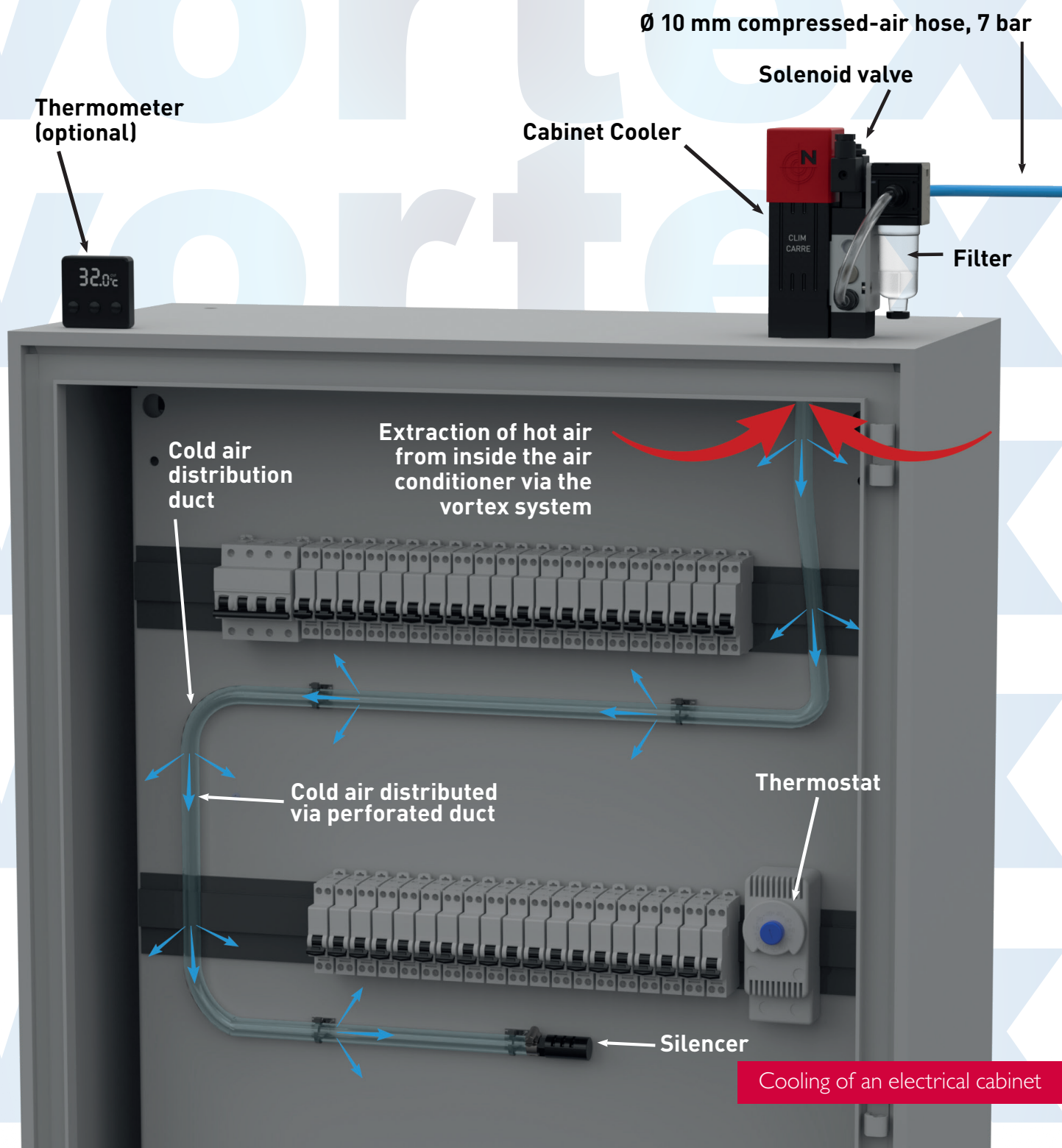
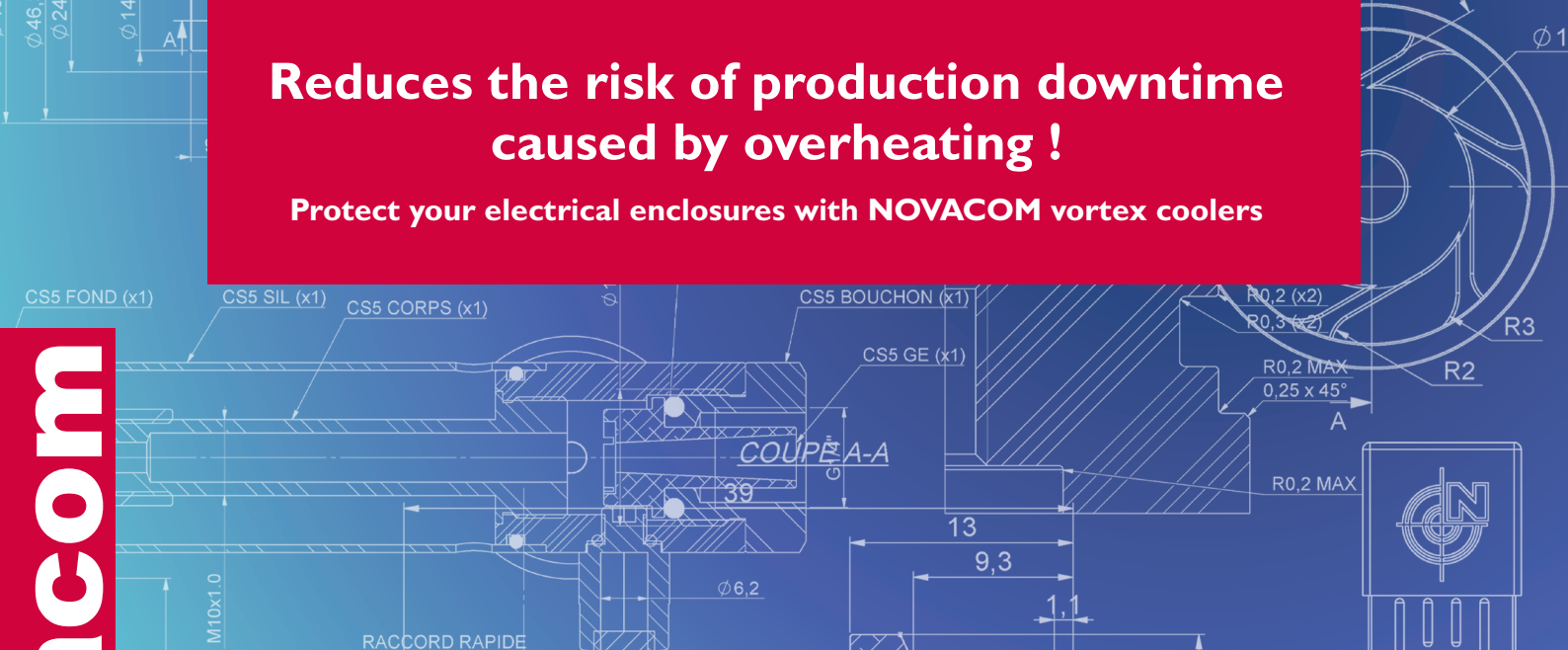
up to
-40°C

Temperature delta up to -40°C at the generator compared with the compressed air temperature.

Reduces the risk of production downtime caused by overheating !

Protect your electrical enclosures with NOVACOM vortex coolers

novacom



Cooling of an electrical cabinet

clim & clim-2 EL





In industrial environments, electrical cabinets are **often exposed to rising temperatures**, which **can lead to overheating of their internal components**. This may result in malfunctions or even equipment failure. A **vortex-effect cooler** helps prevent such issues by **regulating the internal temperature of the enclosure**.

Additionally, **this type of cooler creates a slight overpressure inside the cabinet**, which helps prevent dust ingress and contamination.

These coolers are designed for electrical enclosures with a **maximum volume of approximately 2 cubic meters**, depending on the vortex generator selected. They provide an effective solution for a wide range of applications.

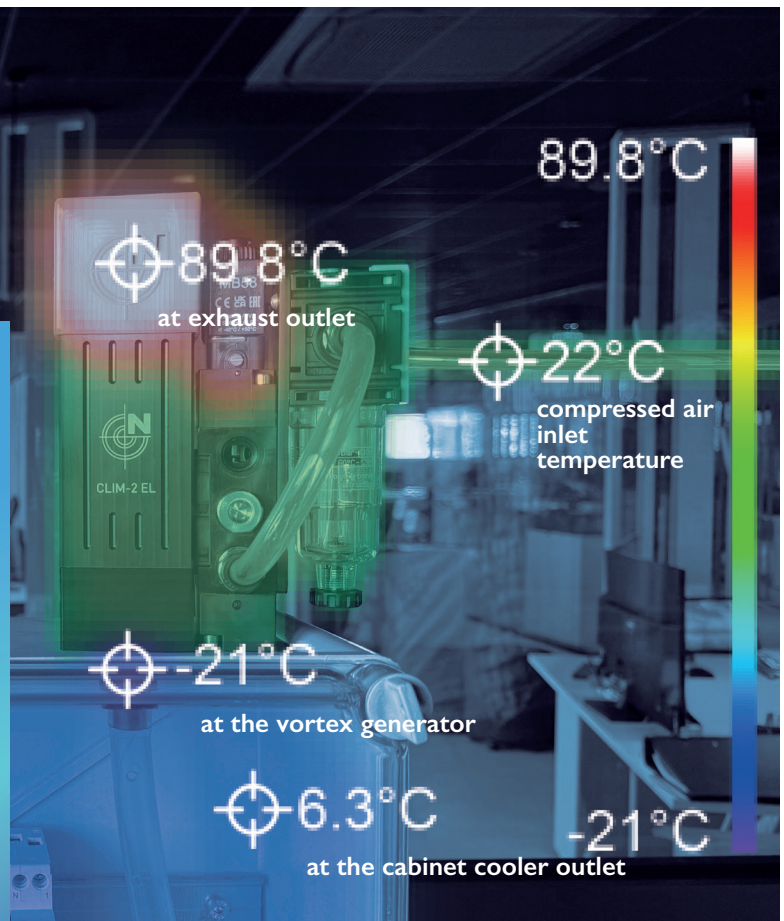
- Installation simple
- No maintenance and removable parts
- Reliable, resistant and sturdy



Ref.	Connec- tion (gas)	Generators	Cooling capacity		Consumed air at 7 bars (l/min)	Cabinet size (m)	Operating pressure range (Bar)	Weight (g)	Materials
			(Kcal/h)*	(BTU/h)					
CLIM 500 / CLIM EL 500 / CLIM-2 EL 500	G1/4"	GEA 35R 	95	376,99	430	0,5 x 0,6 x 0,2	6 to 7	Clim / Clim EL : 1085	Clim / Clim EL : Stainless steel
CLIM 900 / CLIM EL 900 / CLIM-2 EL 900	G1/4"	GEA 35R 	135	535,72	495	0,8 x 0,6 x 0,2			
CLIM 1500 / CLIM EL 1500 / CLIM-2 EL 1500	G1/4"	GEA 35R 	440	1746,06	597	1,0 x 1,0 x 0,4		Clim-2 EL : 1593	Clim-2 EL : Aluminium
CLIM 2500 / CLIM EL 2500 / CLIM-2 EL 2500	G1/4"	GEA 35R 	720	2857,19	786	1,8 x 1,8 x 0,6			

Engineering, Manufacturing & Testing

To ensure the **reliability and efficiency** of our products, we carry out **rigorous testing to guarantee their optimal performance** immediately after development by our design and engineering department.



vortex

range

NOVACOM develops and designs equipment in France that operates using the **Vortex effect**, a phenomenon derived from fluid mechanics. Powered by compressed air, our Vortex solutions provide **precise climate control and cooling for a wide range of industrial applications.**

By leveraging the Vortex effect, our products ensure rapid **cooling and reliable performance**, even in the most **demanding environments.**



Scan here to get all the technical sheets for the Vortex range.

vortex tubes

Vortex tubes are an innovative source of cold air, **operating on compressed air and offering mobility thanks to their magnetic bases.** They are used for cooling small areas or small volumes. They can also be connected directly to a duct for remote cold air delivery.

They can also be connected directly to a duct for the distribution of cool air to remote areas.

- No maintenance and removable parts
- No sparks or interferences
- Reliable, resistant and sturdy
- Easy to install

- Instant on/off functionality and simple control



cold air guns

Cold air guns provide a **localized and precise cold air source**, also benefiting from mobility thanks to **their magnetic bases.** You can equip cold air guns with custom designed flexible arms to meet your specific needs.

These articulated arms are made of **independent ball-joint segments**, allowing a high degree of movement flexibility, and are fitted with threaded connectors to ensure secure attachment.

- Simple connection
- No maintenance and removable parts

- Lightweight solution
- Magnetic base and generators provided



NOVACOM • Z.A. de Sais et Rosières • 30, rue de l'épau • 59230 ROSULT • France • Tel.: +33 (0)3 27 30 53 53
• VAT number: FR57 381 120 484

Ref.	Connection (gas)	Generators	Consumed air at 7 bar (l/min)	Cooling capacity		Operating pressure (bar)	Material
				(Kcal/h)*	(BTU/h)		
CS15 R* TV10 R	G1/4"	GEA 10R	430	95	376,99	7	Stainless steel
CS15 R* TV15 R		GEA 15R	495	135	535,72		Stainless steel
CS15 YR* TV25 R		GEA 25R	597	440	1746,06		Stainless steel
CS15 YR* TV35 R		GEA 35R	786	720	2857,19		Stainless steel

* The CS15 R – YR models come with 4 generators

Find us on :

up to
-40°C