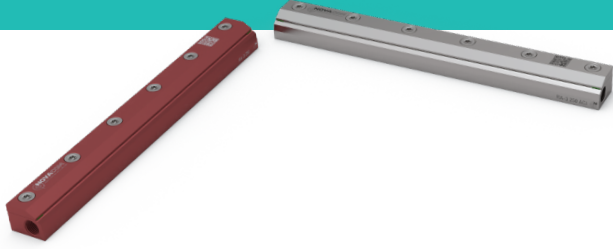


RA-3 250

TECHNICAL SHEET

AIR KNIVES

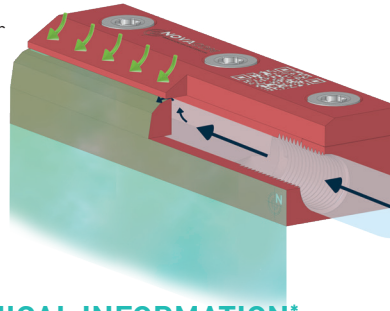
SINGLE FLOW



OPERATING PRINCIPAL

Surrounding air

Amplified air output
(Compressed air input
+ surrounding air)



Compressed
air input

Economical

UP TO
94%
SAVINGS IN AIR
CONSUMPTION

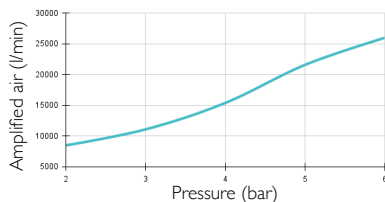
TECHNICAL INFORMATION*

BENEFITS OF USING THE RA-3 250 AIR KNIFE* (Compared to an open pipe)		Reduction in air consumption (%)		Noise reduction (%)		
		Up to 94%		Up to 31%		
PERFORMANCES AIR KNIFE RA-3 *	Pressure (bar)	Air consumption (l/min)	Blowing force (N)		Noise level (dB)	Amplified air (l/min)
	2	425	at 150mm	at 450mm	80	8500
	6	1300	9	8,5	93	26000
VS OPEN PIPE Ø8* (opened on 250mm)		Pressure (bar)	Air consumption (l/min)		Noise level (dB)	Amplified air (l/min)
		6	19000		130	19000

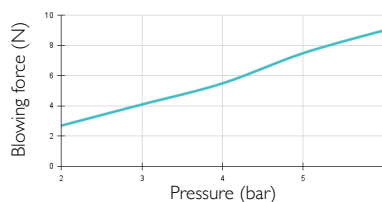
RA-3 250 AIR KNIFE FEATURES

- **Connection** : Female G1/4" • **Weight** : Aluminium : 385g / Stainless steel 316 L : 1 133g
- **Max. operating temperature** : Aluminium : 150°C / Stainless steel 316 L : 450°C • **Max pressure** : 10 bars

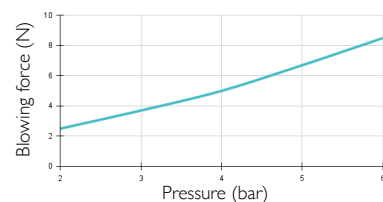
AMPLIFIED AIRSTREAM
DEPENDING ON PRESSURE*



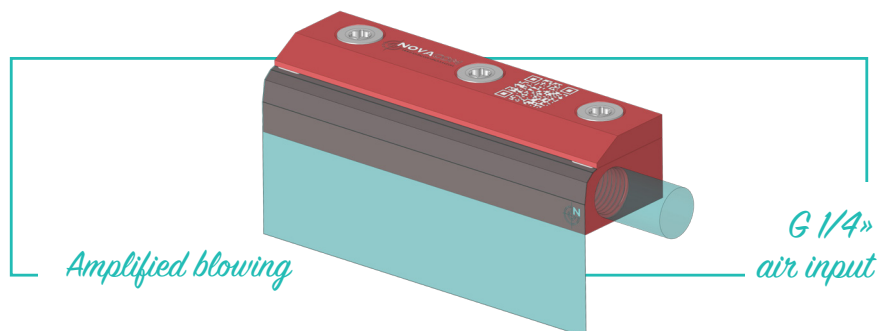
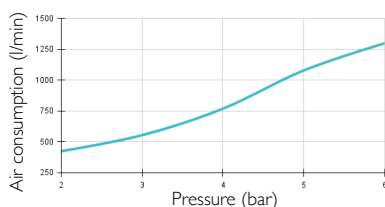
BLOWING FORCE AT 150 MM
DEPENDING ON PRESSURE*



BLOWING FORCE AT 450 MM
DEPENDING ON PRESSURE*

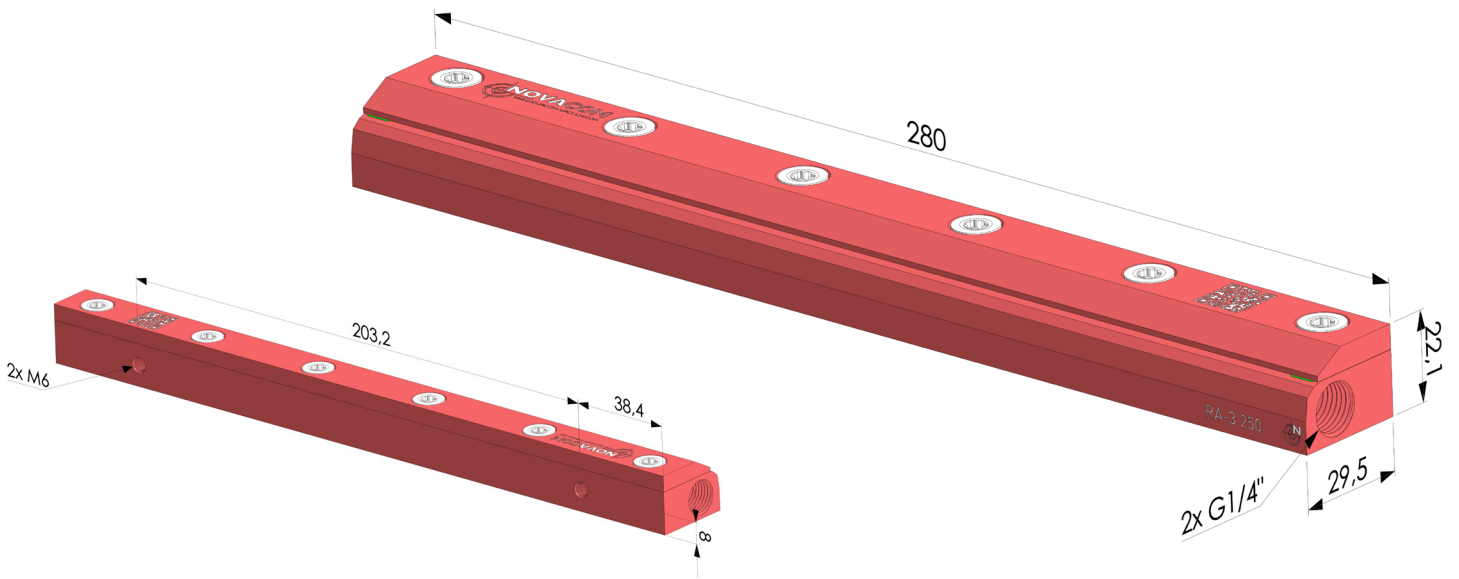


AIR CONSUMPTION
DEPENDING ON PRESSURE*



* **NOTE:** The measurements in this data sheet have been obtained in a laboratory under strict control. The varying conditions of a real industrial environment and the instability of pressure from an industrial compressor can create different values than the ones obtained in a laboratory. Those data are provided for information purposes only.
To achieve the best performance from the air knives, we recommend using a compressed air supply tube with a minimum 8 mm inside.

DIMENSIONS



RA-3 250 ■ Anodized aluminium

RA-3 250 ACI ■ 316L Stainless steel

The values are given in millimeters