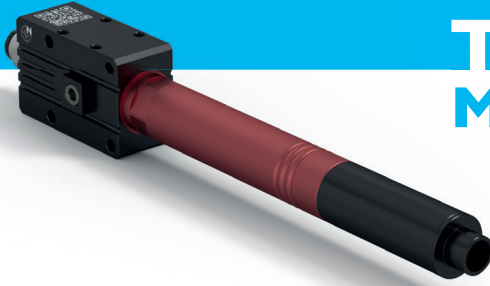


GRIP 30

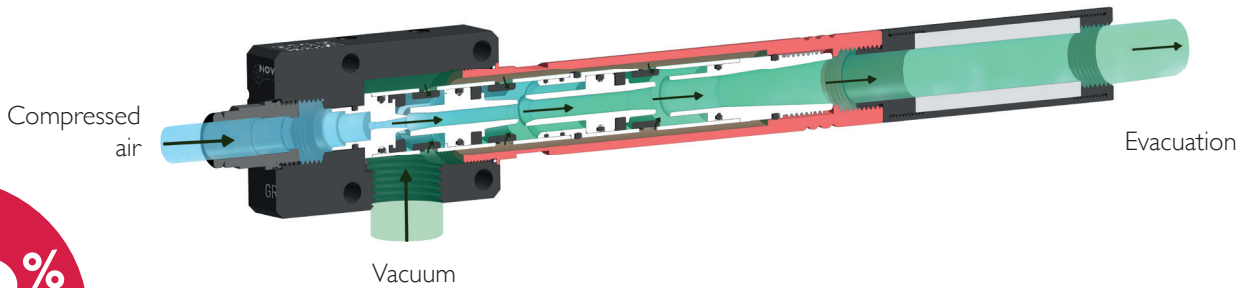
TECHNICAL SHEET

MULTI-STAGE EJECTORS

GRIP SERIES



OPERATING PRINCIPAL



Vacuum

UP TO
93%
OF VACUUM

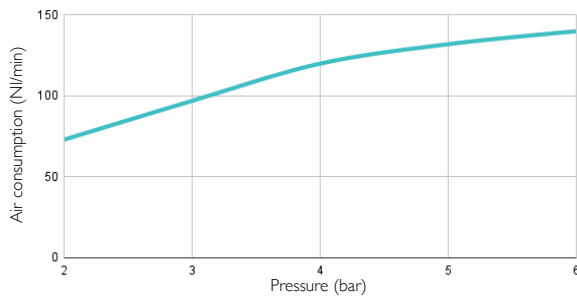
TECHNICAL INFORMATION*

BENEFITS OF USING A GRIP 30*	Pressure (bar)	Air Consumption (NI/mn)	Noise level (dB)	Vacuum level (%)	Suction rate (NI/min)
		6	160	82	93

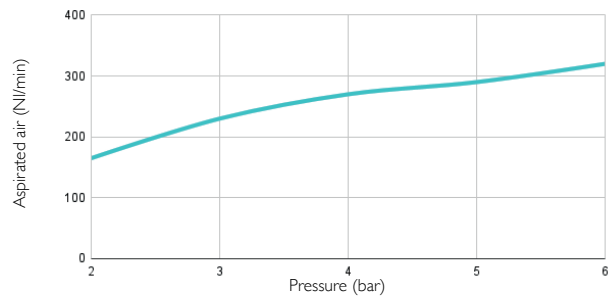
GRIP 30 FEATURES

- **Connection** : Female G3/8" • **Weight** : 303 g • **Max. Operating Temperature** : 80°C
- **Max pressure** : 7 bar • **Materials** : Aluminium, standard nitrile seal

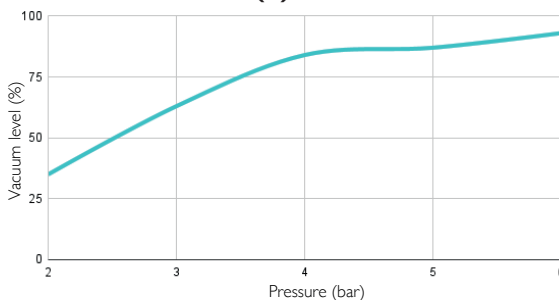
AIR CONSUMPTION DEPENDING ON PRESSURE



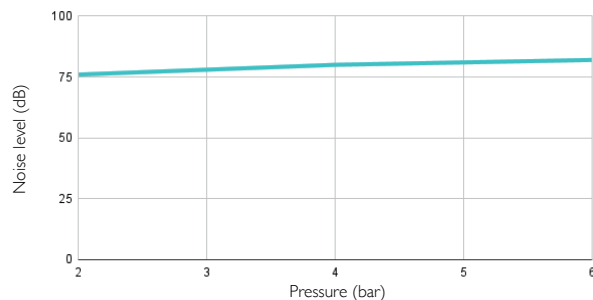
ASPIRATED AIR DEPENDING ON PRESSURE



VACUUM LEVEL (%) DEPENDING ON PRESSURE

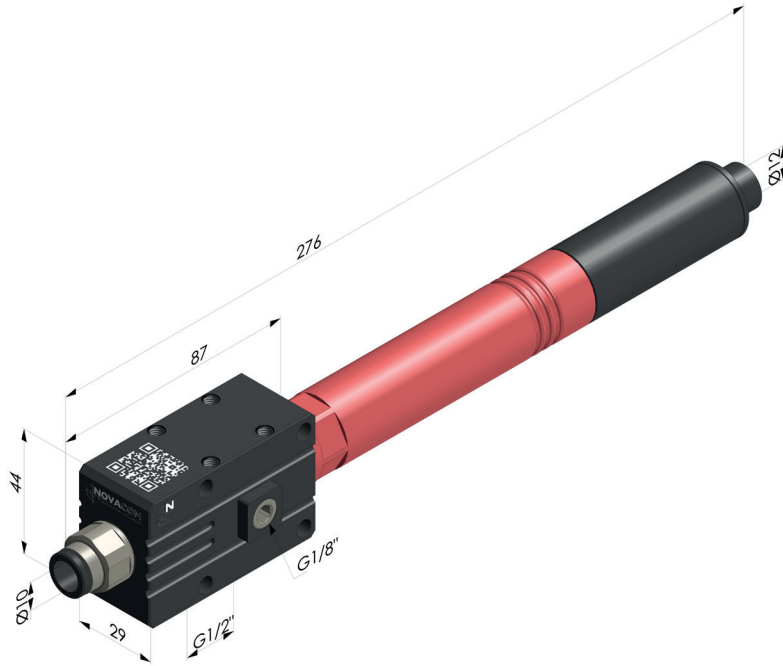


NOISE LEVEL



* NOTE : We recommend supplying the grip using a Ø 8mm tube in order to obtain optimal performance.

DIMENSIONS



GRIP 30 ■ Aluminium