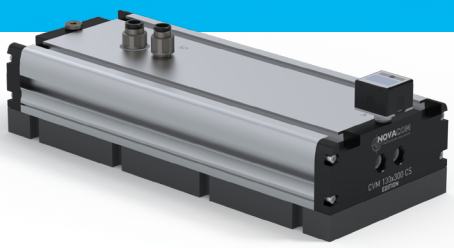
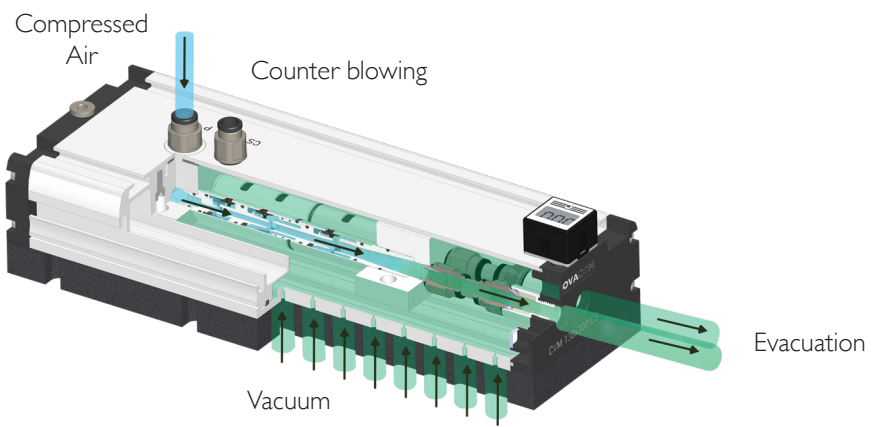


CVM 130X300 CS ED TECHNICAL SHEET EJECTOR VACUUM BOXES



SCHEMATIC DIAGRAM



Vacuum
 UP TO
75%^{*}
 OF VACUUM

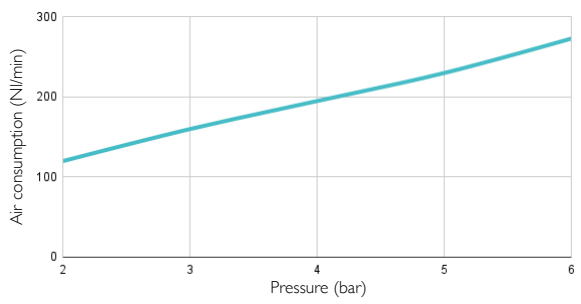
TECHNICAL INFORMATION**

BENEFITS OF USING CVM 130x300 CS ED*	Pressure (bar)	Air consumption (NI/mn)	Noise Level (dB)	Lifting Force (N)	Vacuum level (%)	Suction rate (NI/min)
		6	273	82	644	75

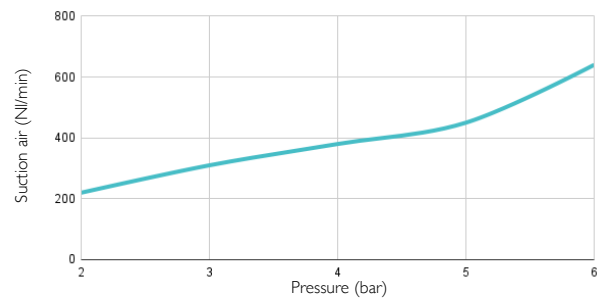
CVM 130x300 CS ED* FEATURES

- Connection : Female G3/8» • Weight : 2,6 kg • Max.Operating Temperature : 60°C
- Max pressure : 7 bar • Materials : Aluminium, standard nitrile seal

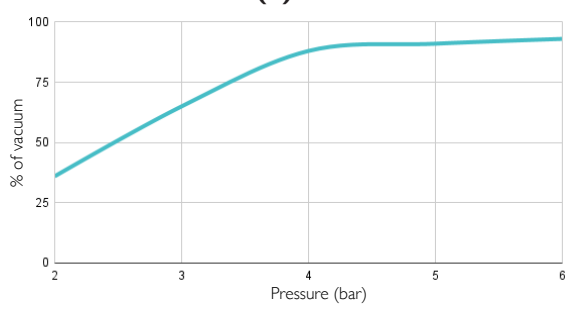
AIR CONSUMPTION DEPENDING ON PRESSURE



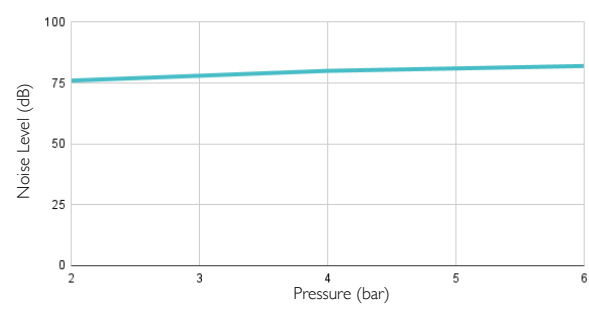
ASPIRATED AIR DEPENDING ON PRESSURE



VACUUM LEVEL (%) DEPENDING ON PRESSURE

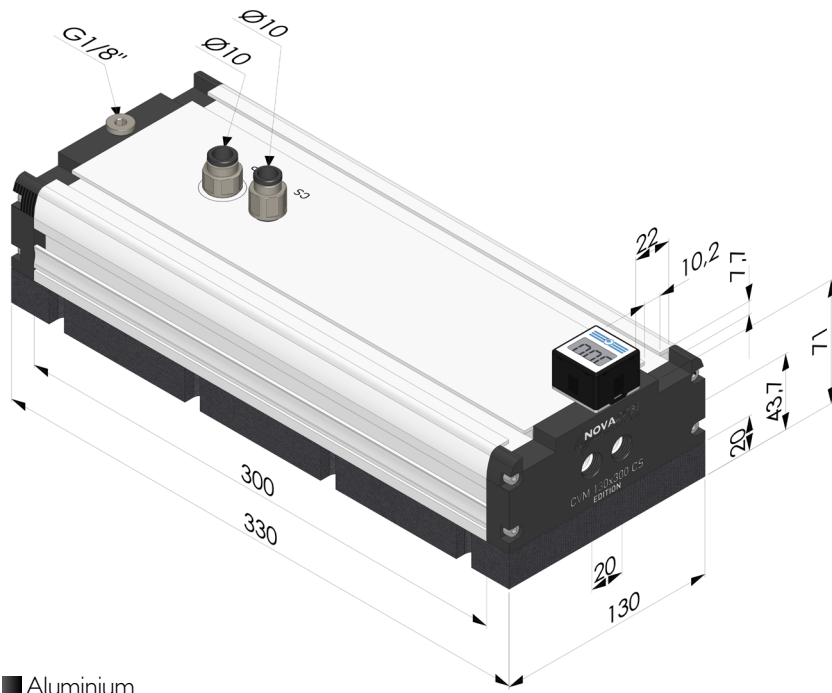


NOISE LEVEL DEPENDING ON PRESSURE



* NOTE : We recommend supplying the CVM through the two G3/8 openings using a Ø 8mm tube in order to obtain optimal performances.
 ** On perfectly airtight product

DIMENSIONS



CVM 130X300 CS ED ■ Aluminium