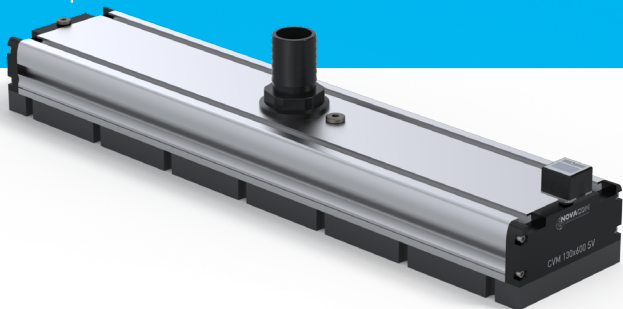
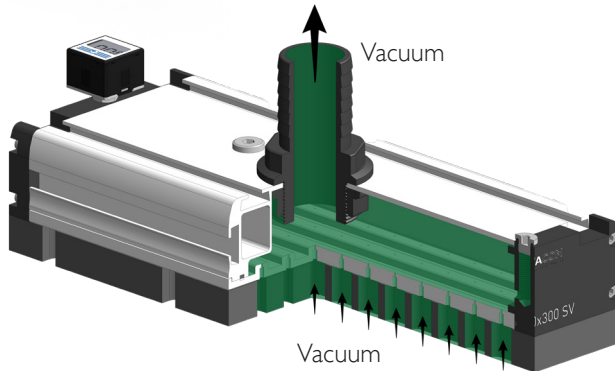


# CVM 130X600 SV ED TECHNICAL SHEET EJECTOR VACUUM BOXES



## SCHEMATIC DIAGRAM



## TECHNICAL INFORMATION\*\*

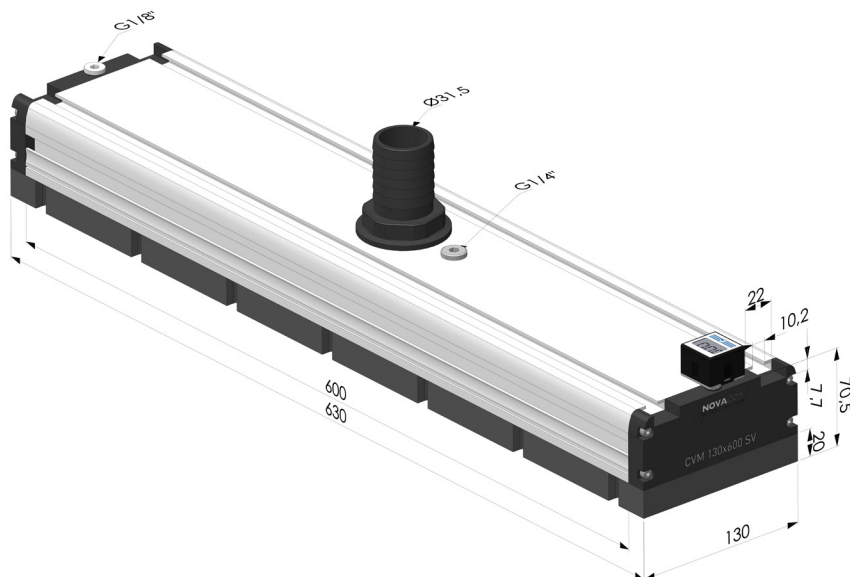
CVM 130x600 SV ED	Pressure (bar)	Air consumption (NI/mn)	Noise level (dB)	Lifting force (N)	Ø inner hose	Minimum required suction flow rate (l/min)*
	-	-	-	820	40mm	900

\* Minimal required recommendations : External vacuum generator with a suction flow rate of 900 l/min to 1215 l/min.

## CVM 130x600 SV ED FEATURES

- Weight : 4 Kg • Max. Operating Temperature : 60°C
- Max pressure : 7 bar • Materials : Aluminium, standard nitrile seal; EPDM

## DIMENSIONS



## EXPLODED VIEW

- |   |                       |    |                                 |
|---|-----------------------|----|---------------------------------|
| 1 | Partition (x2)        | 7  | Seal partition (x2)             |
| 2 | CVM body (x1)         | 8  | CVM bottom (x1)                 |
| 3 | Cylindrical plug (x2) | 9  | Foam band with filter (x1)      |
| 4 | P60VL F3 display (x1) | 10 | CHC M4x16 hex socket screw (x8) |
| 5 | Supply connector (x1) | 11 | FHC M4x12 flat head screw (x14) |
| 6 | Lock-nut (x1)         | 12 | Bottom seal of CVM (x2)         |

