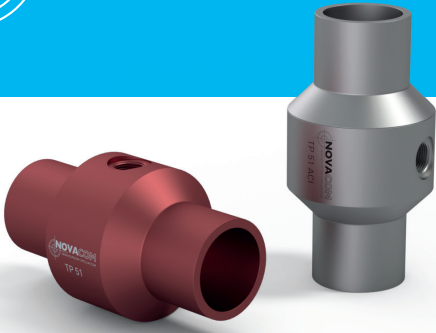
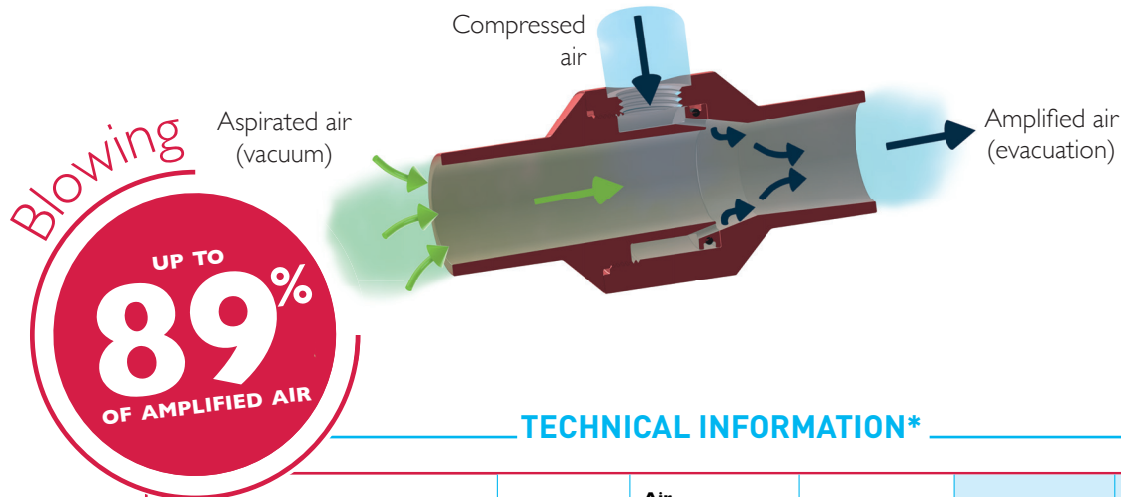


TP 51 TECHNICAL SHEET EJECTORS

PNEUMATIC TRANSPORT SERIES



OPERATING PRINCIPAL



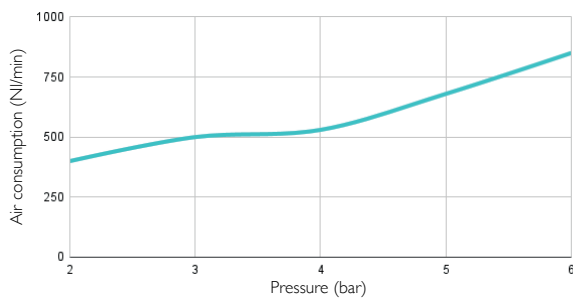
TECHNICAL INFORMATION*

BENEFITS OF USING A TP 51* EJECTOR	Pressure (bar)	Air Consumption (NI/mn)	Noise level (dB)	Suction rate (NI/min)	Amplified Air (l/min)
	6	850	102	7600	7828

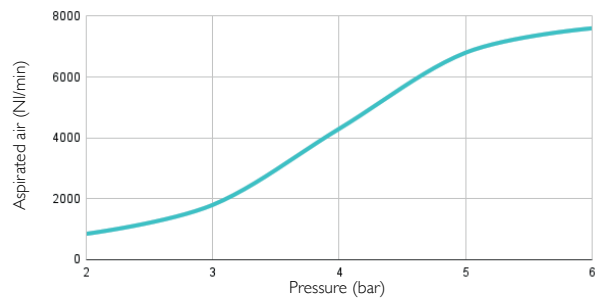
TP 51* FEATURES

- **Connection :** Female G3/8" • **Weight :** Aluminium : 660g - Stainless Steel 316L : 1930g • **Max.Operating Temperature :** Aluminium : 80°C - Stainless Steel 316L : 80°C
- **Max pressure :** 7 bar • **Materials :** Aluminium / Stainless Steel 316L, standard nitrile seal

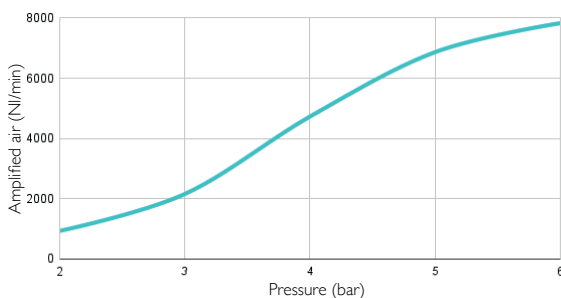
AIR CONSUMPTION DEPENDING ON PRESSURE



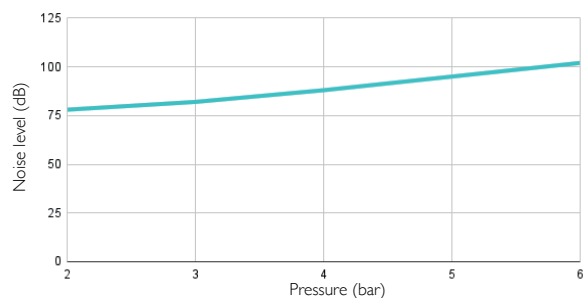
ASPIRATED AIR DEPENDING ON PRESSURE



AMPLIFIED AIR DEPENDING ON PRESSURE

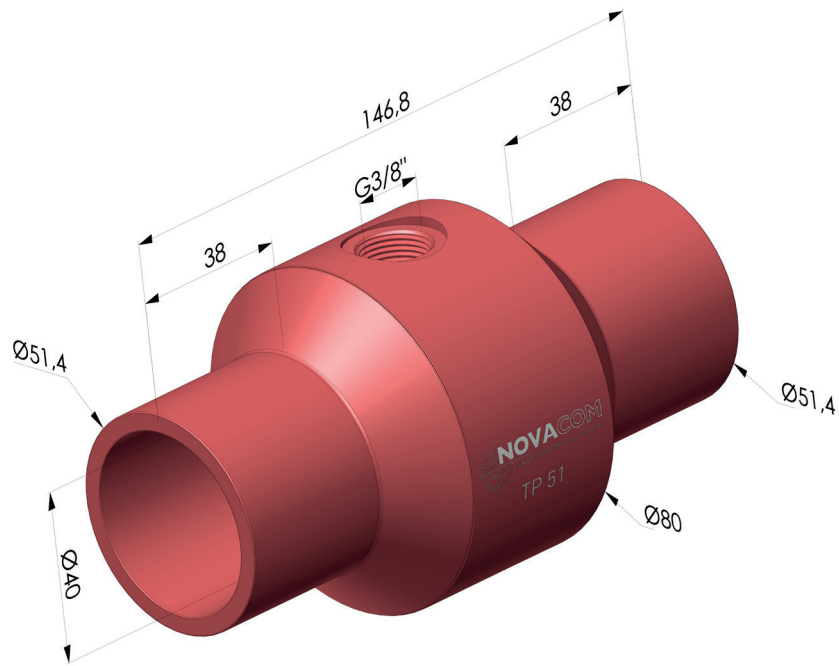


NOISE LEVEL DEPENDING ON PRESSURE



* **NOTE :** We recommend using a Øint. 10mm tube to supply the TP 51, in order to obtain optimal performances.

DIMENSIONS



TP 51 ■ Aluminium

TP 51 ■ Stainless Steel 316L