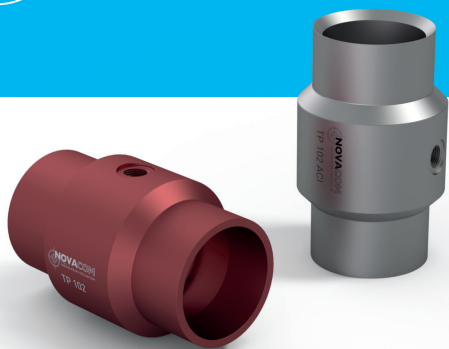
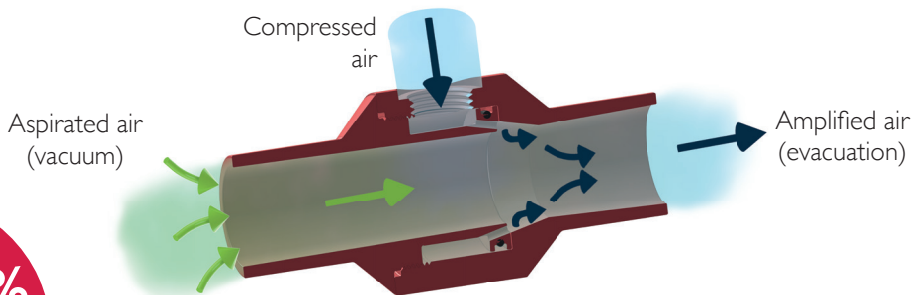


# TP 102 TECHNICAL SHEET EJECTORS

## PNEUMATIC TRANSPORT SERIES



### OPERATING PRINCIPAL



Blowing  
**UP TO 90%  
OF AMPLIFIED AIR**

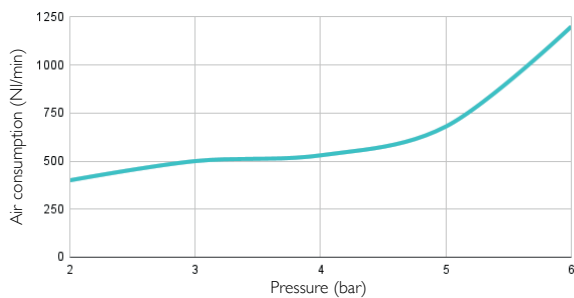
### TECHNICAL INFORMATION\*

BENEFITS OF USING A TP 102* EJECTOR	Pressure (bar)	Air Consumption (NI/mn)	Noise level (dB)	Suction rate (NI/min)	Amplified Air (l/min)
	6	1200	102	10700	12091

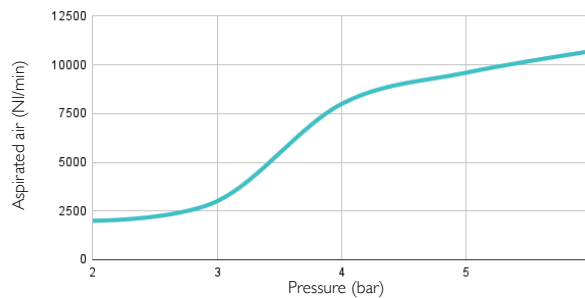
### TP 102\* FEATURES

- **Connection** : 2x Female G1/2" • **Weight** : Aluminium : 2200g - Stainless Steel 316L : 6000g • **Max. Operating Temperature** : Aluminium : 80°C - Stainless Steel 316L : 300°C
- **Max pressure** : 7 bar • **Materials** : Aluminium / Stainless Steel 316L, standard nitrile seal

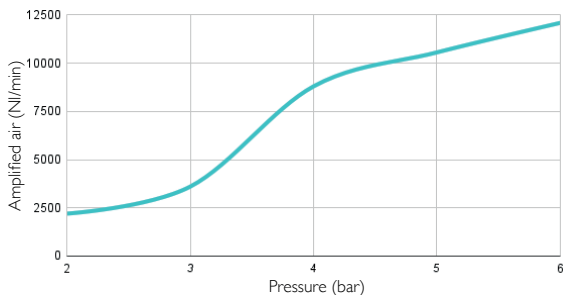
**AIR CONSUMPTION DEPENDING ON PRESSURE**



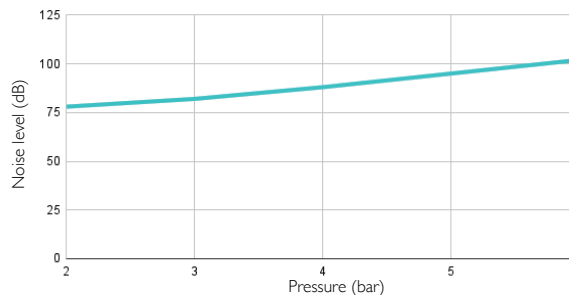
**ASPIRATED AIR DEPENDING ON PRESSURE**



**AMPLIFIED AIR DEPENDING ON PRESSURE**

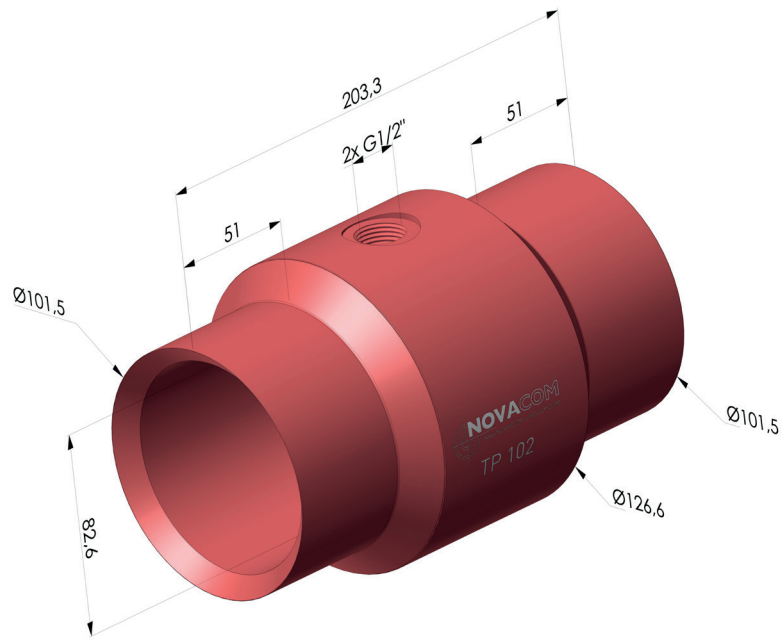


**NOISE LEVEL DEPENDING ON PRESSURE**



\* **NOTE** : We recommend using a Øint 12mm tube to supply the TP 102, in order to obtain optimal performances.

## DIMENSIONS



**TP 102** ■ Aluminium

**TP 102** ■ Stainless Steel 316L