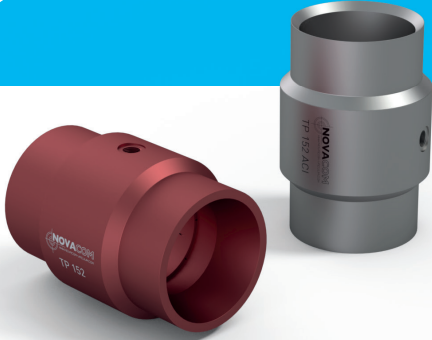
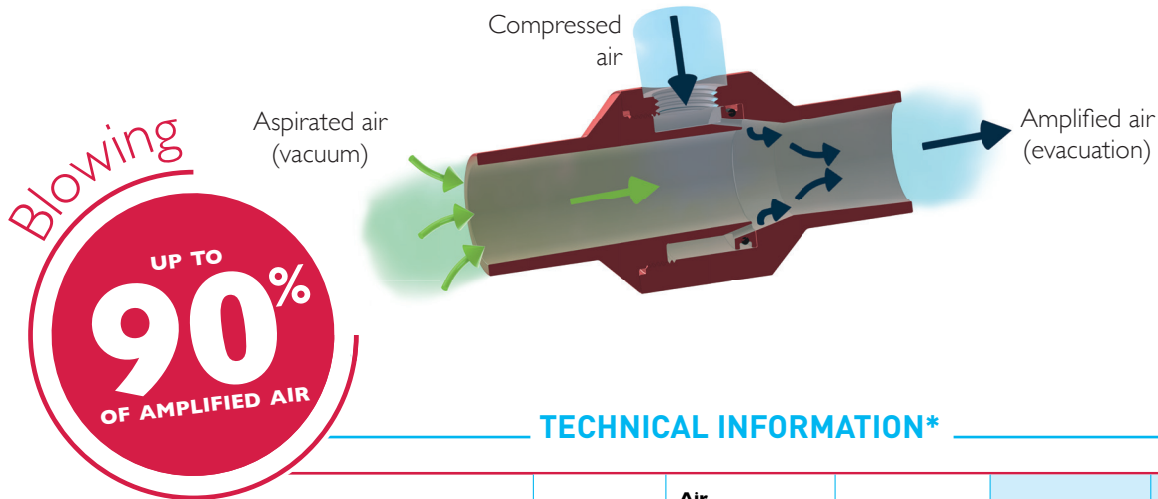


TP 152 TECHNICAL SHEET EJECTORS

PNEUMATIC TRANSPORT SERIES



OPERATING PRINCIPAL



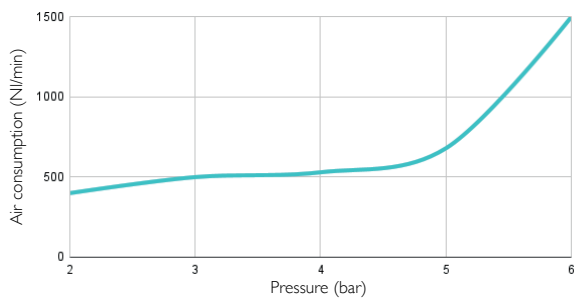
TECHNICAL INFORMATION*

BENEFITS OF USING A TP152* EJECTOR	Pressure (bar)	Air Consumption (NI/mn)	Noise level (dB)	Suction rate (NI/min)	Amplified Air (l/min)
	6	1500	102	13000	14690

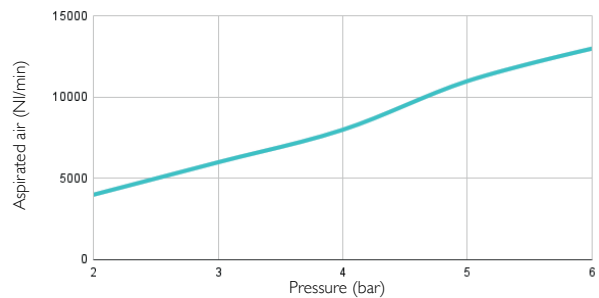
TP 152* FEATURES

- **Connection** : 2x Female G1/2" • **Weight** : Aluminium : 5600g - Stainless Steel 316L : 9100g • **Max. Operating Temperature** : Aluminium : 80°C - Stainless Steel 316L : 300°C
- **Max pressure** : 7 bar • **Materials** : Aluminium / Stainless Steel 316L, standard nitrile seal

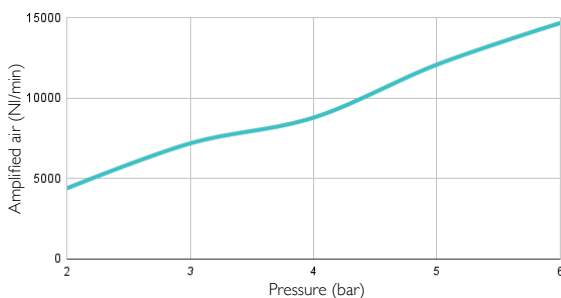
AIR CONSUMPTION DEPENDING ON PRESSURE



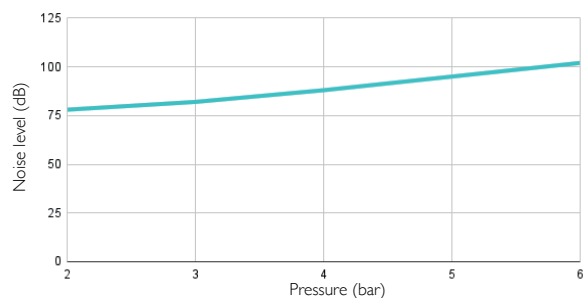
ASPIRATED AIR DEPENDING ON PRESSURE



AMPLIFIED AIR DEPENDING ON PRESSURE

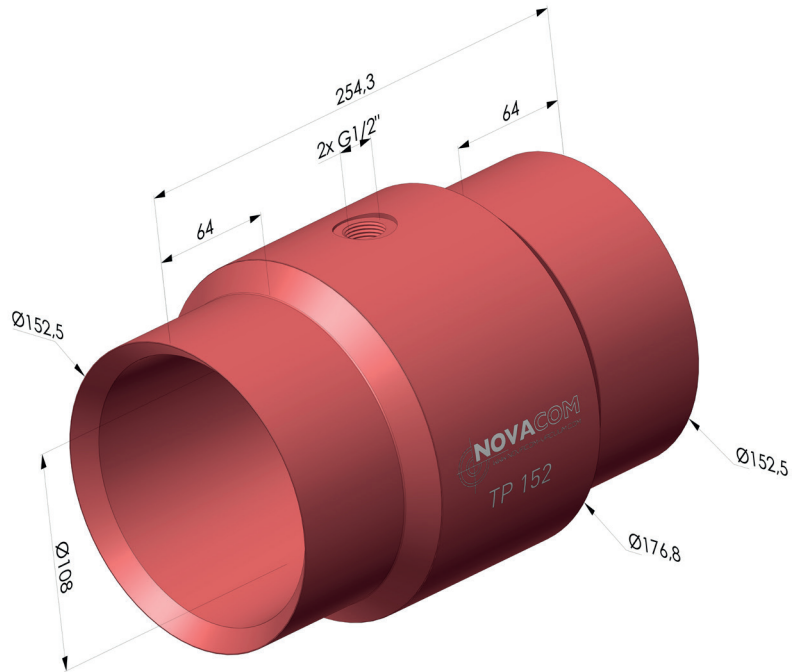


NOISE LEVEL DEPENDING ON PRESSURE



* **NOTE** : We recommend using a Øint 12mm tube to supply the TP 152, in order to obtain optimal performances.

DIMENSIONS



TP 152 ■ Aluminium

TP 152 ■ Stainless Steel 316L