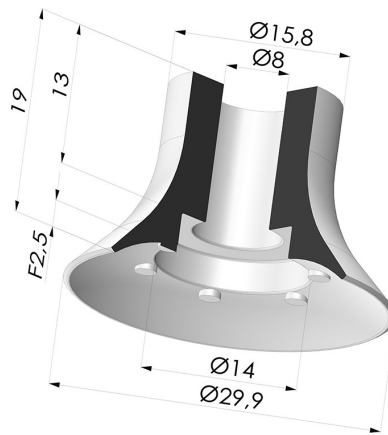


**TECHNICAL INFORMATION**

**Range :** Suction cup  
**Category :** Plates  
**Series :** VPC  
**Height (in mm) :** 19  
**Shape :** Plate  
**Contact lip diameter :** 29.9 mm  
**inner barrel diameter :** 8 mm  
**Number of bellows :** 0.5 Bellows  
**Horizontal force :** 29.81 N  
**Vertical force :** 14.91 N  
**Volume :** 1.31 cm<sup>3</sup>  
**Mass :** 4 g  
**Arrow :** 2.5 mm



**Variants:**



Variant reference:

**VPC 30NI A**

- Color: Black
- Matter: Nitrile
- Shore Hardness: SH50



Variant reference:

**VPC 30SLT A**

- Color: Translucent
- CE food certified
- Matter: Silicone
- Shore Hardness: SH60



Variant reference:

**VPC 30MNT A**

- Color: Bordeaux
- Matter: Non-staining material for plastics processing
- Shore Hardness: SH60

**Related products:**



**Separable Female Fitting G1/4"**

Product reference: D



**Separable Male Fitting G1/4"**

Product reference: E



**Adaptor - Female G1/4" - Female M6**

Product reference: F14F6



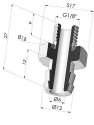
**Adaptor - Female 1/8G - Female M6**

Product reference: F18F6



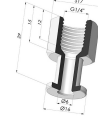
**Separable Female Fitting G1/8"**

Product reference: H



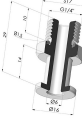
**Separable Male Fitting G1/8"**

Product reference: I



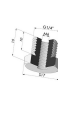
**Crimped Female Fitting G1/4"**

Product reference: L



**Crimped Male Fitting G1/4"**

Product reference: M



**Adaptor - Male 1/4G - Female M6**

Product reference: M14F6



**Adaptor - Male 1/8G - Female M6**

Product reference: M18F6



**Screw M5 - Head Ø 14 mm - L 20.5 mm**

Product reference: M5



**Screw M6 - Head Ø 14 mm - L 20.5 mm**

Product reference: M6



**Crimped Female Fitting G1/8"**

Product reference: R



**Crimped Male Fitting G1/8"**

Product reference: S



**Screw M8 - Head Ø 14 mm - L 20 mm**

Product reference: M8T14L20.5