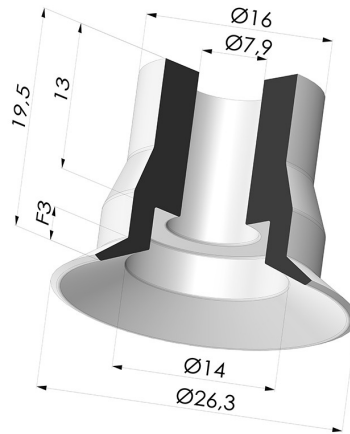


TECHNICAL INFORMATION

Range :	Suction cup
Category :	Plates
Series :	VPC
Height (in mm) :	19.5
Shape :	Plate
Contact lip diameter :	26.3 mm
inner barrel diameter :	7.9 mm
Number of bellows :	0.5 Bellows
Horizontal force :	22.11 N
Vertical force :	11.07 N
Volume :	0.82 cm ³
Mass :	3.60 g
Arrow :	3 mm



Variants:



Variant reference:

VPC 26SLT A

- Color: Translucent
- CE food certified
- Matter: Silicone
- Shore Hardness: SH60



Variant reference:

VPC 26MNT A

- Color: Bordeaux
- Matter: Non-staining material for plastics processing
- Shore Hardness: SH60



Variant reference:

VPC 26NI A

- Color: Black
- Matter: Nitrile
- Shore Hardness: SH50

Related products:



Separable Female Fitting G1/4"

Product reference: D



Separable Male Fitting G1/4"

Product reference: E



Adaptor - Female G1/4" - Female M6

Product reference: F14F6



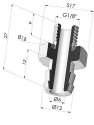
Adaptor - Female 1/8G - Female M6

Product reference: F18F6



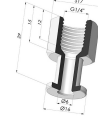
Separable Female Fitting G1/8"

Product reference: H



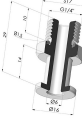
Separable Male Fitting G1/8"

Product reference: I



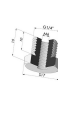
Crimped Female Fitting G1/4"

Product reference: L



Crimped Male Fitting G1/4"

Product reference: M



Adaptor - Male 1/4G - Female M6

Product reference: M14F6



Adaptor - Male 1/8G - Female M6

Product reference: M18F6



Screw M5 - Head Ø 14 mm - L 20.5 mm

Product reference: M5



Screw M6 - Head Ø 14 mm - L 20.5 mm

Product reference: M6



Crimped Female Fitting G1/8"

Product reference: R



Crimped Male Fitting G1/8"

Product reference: S



Screw M8 - Head Ø 14 mm - L 20 mm

Product reference: M8T14L20.5