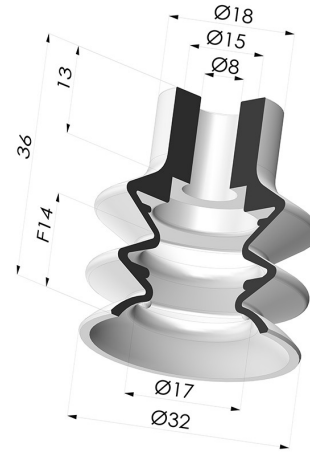


TECHNICAL INFORMATION

Range : Suction cup
Category : With bellows
Series : 2
Height (in mm) : 36
Shape : 2.5 Bellows
Contact lip diameter : 31.8 mm
inner barrel diameter : 8 mm
Number of bellows : 2.5 Bellows
Horizontal force : 35.2 N
Vertical force : 17.6 N
Volume : 7.43 cm³
Mass : 9.40 g
Arrow : 14 mm



Variants:



Variant reference:
2 31MNT A

- Color: Bordeaux
- Matter: Non-staining material
- Shore Hardness: SH60



Variant reference:
2 31PU A

- Color: Blue
- Matter: Polyurethane
- Shore Hardness: SH60



Variant reference:
2 31SL A

- Color: Red food-grade CE certification
- Matter: Silicone
- Shore Hardness: SH60



Variant reference:
2 31SLT A

- Color: Translucent
- CE food certified
- Matter: Silicone
- Shore Hardness: SH60



Variant reference:
2 31SLV A

- Color: Green food certification CE
- Matter: Silicone
- Shore Hardness: SH60



Variant reference:
2 31NI A

- Color: Black
- Matter: Nitrile
- Shore Hardness: SH50



Variant reference:
2 31NR A

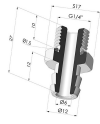
- Color: Gray
- Matter: Natural rubber
- Shore Hardness: SH50

Related products:



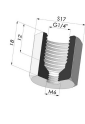
Separable Female Fitting G1/4"

Product reference: D



Separable Male Fitting G1/4"

Product reference: E



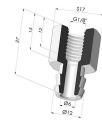
Adaptor - Female G1/4" - Female M6

Product reference: F14F6



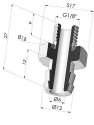
Adaptor - Female 1/8G - Female M6

Product reference: F18F6



Separable Female Fitting G1/8"

Product reference: H



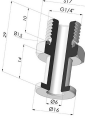
Separable Male Fitting G1/8"

Product reference: I



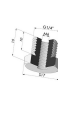
Crimped Female Fitting G1/4"

Product reference: L



Crimped Male Fitting G1/4"

Product reference: M



Adaptor - Male 1/4G - Female M6

Product reference: M14F6



Adaptor - Male 1/8G - Female M6

Product reference: M18F6



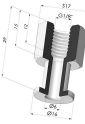
Screw M5 - Head Ø 14 mm - L 20.5 mm

Product reference: M5



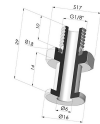
Screw M6 - Head Ø 14 mm - L 20.5 mm

Product reference: M6



Crimped Female Fitting G1/8"

Product reference: R



Crimped Male Fitting G1/8"

Product reference: S