

TECHNICAL INFORMATION

- Range :** Suction cup
- Category :** With bellows
- Series :** 8
- Height (in mm) :** 44
- Shape :** 3.5 Bellows
- Contact lip diameter :** 26 mm
- inner barrel diameter :** 5mm
- Number of bellows :** 3.5 Bellows
- Horizontal force :** 22 N
- Vertical force :** 11 N
- Arrow :** 20 mm



Variants:



Variant reference:

- 80A 26SL A**
- Color: Red
- Matter: Silicone
- Shore Hardness: SH60

Material guide:

| | Material | Code | Temperature resistance (°C) | Flexibility | Abrasion resistance | UV/Weather resistance | Oil resistance | Food compatibility | Migration test |
|--|---------------------------|------|-----------------------------|-------------|---------------------|-----------------------|----------------|--------------------|----------------|
| | Silicone Red (Shore SH60) | SLR | -60/+250 | ✓✓✓ | ✗ | ✓✓✓ | ✗ | FDA ** | ✗ |

Excellent | Good | Low | Poor | Not recommended

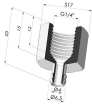
*FDA and/or EC certificate may be requested for various references at the time of order; please contact us.

** Food contact certification: (EC) 1935/2004 - (FDA) 21 CFR 177.2600

*** Food contact certification: (EC) 10/2011 - (FDA) 21 CFR

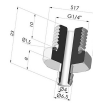
Requests for FDA and/or EC certificates must be made AT THE TIME OF ORDER. Any later request will incur additional charges. To meet the expectations of our industrial customers, NOVACOM offers the widest range of elastomer and thermoplastic materials. We can also develop new materials based on precise specifications, in order to solve specific applications for our customers.

Related products:



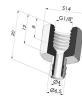
Separable Female Fitting G1/4"

Product reference: B



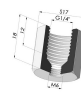
Separable Male Fitting G1/4"

Product reference: C



Separable Female Fitting G1/8"

Product reference: F



Adaptor - Female G1/4" - Female M6

Product reference: F14F6



Adaptor - Female 1/8G - Female M6

Product reference: F18F6



Separable Male Fitting G1/8"

Product reference: G



Adaptor - Male 1/4G - Female M6

Product reference: M14F6



Adaptor - Male 1/8G - Female M6

Product reference: M18F6



Separable Male Fitting M5

Product reference: M5C11



Separable Male Fitting M6

Product reference: M6C



Separable Male Fitting M5

Product reference: M5C

--