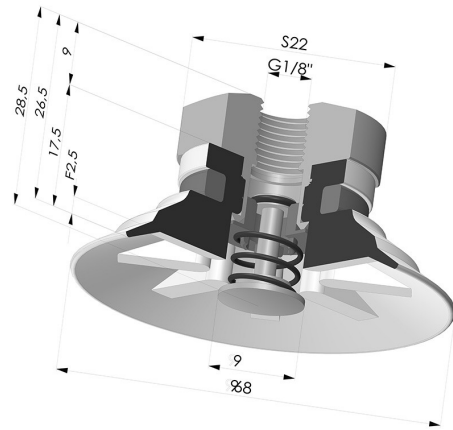


**TECHNICAL INFORMATION**

|                                |             |
|--------------------------------|-------------|
| <b>Range :</b>                 | Suction cup |
| <b>Category :</b>              | Plates      |
| <b>Series :</b>                | 90          |
| <b>Height (in mm) :</b>        | 28.5        |
| <b>Shape :</b>                 | Plate       |
| <b>Contact lip diameter :</b>  | 68          |
| <b>inner barrel diameter :</b> | G1/8        |
| <b>Number of bellows :</b>     | 0.5 Bellows |
| <b>Horizontal force :</b>      | 96 N        |
| <b>Vertical force :</b>        | 48 N        |
| <b>Arrow :</b>                 | 2.5 mm      |

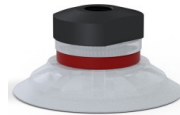


**Variants:**



Variant reference:  
**90 50SL 18D-2-PAL**

- Color: Red food-grade CE certification
- Matter: Silicone
- Shore Hardness: SH60



Variant reference:  
**90 50SLT 18D-2-PAL**

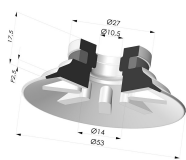
- Color: Translucent
- CE food certified
- Matter: Silicone
- Shore Hardness: SH60



Variant reference:  
**90 50NI 18D-2-PAL**

- Color: Black
- Matter: Nitrile
- Shore Hardness: SH50

**Related products:**



**Flat Suction Cup Series 90, Ø 50 mm**

Product reference: 90 50-- A